

Back-to-School Extra

Alpine Sun



VOL. 9. NO. 22 (216) ALPINE, CALIF. FRIDAY, SEPT. 9, 1960 10¢

Alpine is Land of Opportunity!

Ed Michaels Dies

Services are being held in Paris Mortuary Chapel in EC this morning for Edward James Michael, 40, who died Monday following a heart attack, from which he had been a sufferer for several years. He died in EC Valley Hospital where he had been taken

MANY THINGS ARE NEEDED IN GROWING COMMUNITY

While unemployment has been dogging the nation for many months, there has been no such trouble in this growing mountain village of 3100.

In fact residents complain of being unable to get help in many lines. Artisans and crafts-

MORE ON PAGE 26

MORE ON PAGE 24



ROLLICKING FUN WITH SERIOUS HIGHLIGHTS WAS KANGAROO COURT MONDAY BY VFW COOTIES AND LADIES ENCAMPED FOR ANNUAL FUNFEST AT YC GROUNDS. FROM LEFT, JUDGE IS R. B. MCARTHUR; BAILIFF; ED AMES; DEFENSE ATTORNEY, JOHN GAMBLE; DEFENDANT, JOHN W. BURNETT, (SUPERIOR SENIOR VICE-CDR), AND PROSECUTOR, B. L. MAPLES. ALL ARE FROM SD AREA. EVENT WAS SPONSORED BY THE S.W. CORNER, PUP TENT NO. 9 OF SD.

School Open Monday

Supt. Clyde T. Gilley and staff are busy getting everything cleared for action when school opens Monday the 12th, with three buildings and no more double sessions except in kindergarten. This is due to the fine new Harbison Canyon school finished early this summer.

MORE ON PAGE 24

SCHOOL BOARD TO MEET

Monday at 8 in the auditorium Alpine's school trustees will meet with a long agenda of business, following the first day of school, reveals Supt. Clyde Gilley.

H. A. McKaskle General Contractor

Reinforced Concrete
RESIDENTIAL & COMMERCIAL
HI5-3840
Rt. 1, Box 324BB Alpine

EL CAJON THEATRE

Hickory 4-3272

NOW THRU SATURDAY
J. LEMON S. MACLAINE
'THE APARTMENT'
3 STOOGES
'STOP. LOOK & LAUGH'
SUN. MON. TUESDAY
LANCASTER. J. SIMMONS
'ELMER GANTRY'
SCIENCE FICTION
'12 TO THE MOON'

AERO DRIVE-IN

BOSTONIA HI4-8800

NOW THRU TUESDAY
HELD OVER
'HELL TO ETERNITY'
CO-HIT
FRANK SINATRA
'KINGS GO FORTH'
STARTS WEDS.
ICE PALACE
CRAZY LEGS

SWAP MEET EVERY SAT. & SUN
9 to 5, 35¢ a car.

Bear, Wencke Stop Here

A dozen energetic Democrats headed by Jim Bear, (assembly) and Walter Wencke, (congress), stopped off for a jolly breakfast at Alpine Cafe where Mart and Jackie Hazell served the hungry group with one of their famous meals. They were accompanied by their attractive mascot Sandra Valenzuela and a sound truck.

Later they footed it around the village shaking hands with all they could meet, posed for a Sun photo with Alpine's Bob Wilson. They took off for Jacumba and way points, inviting voters to meet Sen. Kennedy in SD on Saturday.

GET SURPRISE WELL!

The Alpine Investment Co., headed by E.L. Freeland, which recently acquired the former Holland tract at Tavern Road and Arnold Way has just been delivered a good well by Tom Dyke.

"It was a surprise" says Dyke "for we drilled 115 feet and didn't hit one rock". He says the well shows 15 gpm, but he is now pump-testing it for volume. Usually a driller will go through a few feet of soil, then "dg" for 10 to 20 feet, then hit blue rock, hard granite, till seams or faults yield water.

Bob Fey from Hospital

Successful removal of a leg tumor with quick recovery got Robert Fey, custodian at the firehouse, home Tuesday noon, and ultimate recovery looks very promising he opines. He is official weatherman at this US station, for which Alpine is always grateful, plus the weather chief at SD.



TED KELLER, OF THE HIGHLANDS, COMPLETED 10 YEARS AT NAVAL AIR STATION, NORTH ISLAND, LAST WEEK. BEING PRESENTED HIS 10-YEAR PIN AND CONGRATULATED BY CAPT. DEXTER OF THE SUPPLY DEPT. KELLER IS A CIVIL SERVICE RIGGER, WORKS ON AIRPLANES. ON MAR. 1 HE RETIRED AS CH. BOATSWAIN AFTER 30 YEARS IN THE NAVY.

Jerry Harmer, who flew down with his wife Ruth, daughter of Mrs. Florence Clarke, left by plane Monday for their home in Santa Rosa. He has about fully recovered from his recent heart attack, looks fine, was even working around the market while here.

FINAL CLOSE-OUT!

ALL 1960 CHEVROLET CARS and TRUCKS



Low, low, low prices!
High trade allowances!
All must be sold!

\$ 1963

Priced From

DELIVERED IN EL CAJON

TERMS! TERMS!! TERMS!!!

SAVE STILL MORE ON A BIG SELECTION OF
DEMONSTRATORS CARS AND TRUCKS

850 El Cajon Blvd.

Open Evenings - Closed Sundays
(Because it is Sunday)



Visit Our New Store in Beautiful College Center



Himmel's

**CAMERA
SHOP**

Photostat Copies While You Wait!

118 E. Main, El Cajon, HI2-9897 Also College Center, Grove, JU2-6721

EDITORIAL

Mobilhome Growth Sets Fantastic Pace!

For years people looked down their noses at trailers, or, to be more expansive, mobilhomes, house trailers, as California designates them on license tags.

And with the increase in these compact palaces on wheels, which today seldom move has come a great rise in trailer parks. One such is nearing

completion on Hwy 80, with 66 spaces, pool, recreation building, cement patios, paved areas, wires underground, gas, water and sewer to each space, in a setting of oaks and sycamores. It is being built by John M. Jones and son Corky, at a cost of \$125,000.

The mobilhome industry says that last year they sold 148,600 units for \$698,800,000. Only a decade ago about 46,000 trailers were sold, while in 1930 a few struggling factories yielded 1300. Those were mere camping and sports trailers. No one ever thought of actually living in one for more than a week or so. Today many families own a mobilhome, parked in a luxurious court, and keep a small one for vacations.

Five years ago was a turning point for the industry when it came out with the 10-wide, then longer ones, 40, 50, and now 60 feet. For these complete homes which have everything—insulation, heated floors, full air conditioning, modern lighting, ranges, refrigerators, even freezers and laundry machines, one pays from \$3,000 to \$10,000. Banks are glad to finance them, and after initial depreciation, a good mobilhome will keep its value for years, with little maintenance.

No wonder this is a booming industry and an expanding way of life! CI

THE ALPINE SUN

America's truest newspaper!

PHONE 5-2415 OR 2394
PUBLISHED SEMI-MONTHLY ON FRIDAY
10¢ A COPY BY MAIL, \$2. YEARLY
2255 TAVERN RD. MAIL, RT. 1, BOX 189

ALPINE, SAN DIEGO COUNTY, CALIFORNIA
OWNED BY HEALTH DEFENSE LEAGUE, INC.
CLARKE IRVINE, EDITOR & PUBLISHER
ALICE IRVINE, ART & COMPOSITION

PRINTED BY PHOTO-OFFSET ON OUR RANCH
EST. JAN. 1952. ADJUDGED 11-12-59 IN
SUPERIOR COURT. NO. 238120 FOR LEGAL

SECOND-CLASS MAIL PRIVILEGES
AUTHORIZED AT ALPINE, CALIF.

MEMBER CO. NEWS SERVICE
ADS, NEWS & SUBS TAKEN AT
ISOBEL'S GIFT SHOP,
2249 HWY 80.



VFW Had Fine Time

Close to 400 Cooties, their ladies and kiddies had a whale of a good time over the long holiday when they came for their annual campout at the Youth Center grounds. Friday morning the first arrived and by Saturday noon the place was teeming with jolly folks.

They came with trailers, campsters, tents and sleeping bags; some stayed at motels, others at homes of VFW friends. They had a business session, cookouts, lots of fun, games and stories and on Monday morning a kangaroo court. By dark Monday the last had trekked out, voted Alpine a fine place for such a meet.

Two prominents were on hand, Jim Lane, first past district commander, and Ray Rainwater, past state commander. Adj. Bert Fuller, who was on hand to make the visitors welcome, reports that 143 registered, most from the SD area.

Draft board — world's largest travel agency.

Cdr. H.P. Buergey, CG of NALF, El Centro, with his wife and son David, were Sunday visitors at the Ted Keller's home in the Highlands. They are quite interested in settling here after he retires.

KARI JEWELERS

WE TEACH THE WATCH TO TICK
A FINLAND TRAINED EXPERT
30 YEARS EXPERIENCE
ALL KINDS WATCHES AND CLOCKS
REPAIRED
ALL WORK GUARANTEED
116 PRESCOTT
HI4-7304 EL CAJON, CALIF.

AIRPORT CAFE

AIR-CONDITIONED
Mixed Drinks & Cocktails
Bring the Family for Our
Delicious Sunday Specials.
Open 6 am to 9 pm
Banquet Room for 150
GILLESPIE FIELD HI2-3567

Benbough's

In El Cajon

Fine Furniture

Floor Coverings

Draperies

FREE DECORATING SERVICE

Phone for an Appointment

316 N. MAGNOLIA

Benbough's

HI4-3158

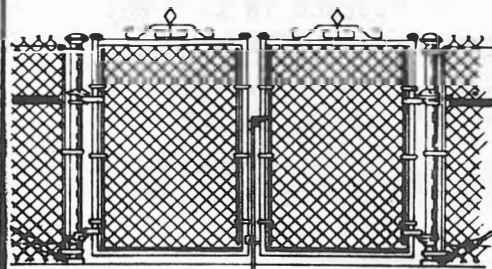
READ THE SUN. THEN PASS IT ON.

COMPLETE FENCING

American Fence Co.

327 Cypress Lane
HI2-3396

CHAIN LINK - REDWOOD
BLOCK WALLS
FREE ESTIMATES



A spade is of use only when you dig with it Even so is truth.

**SAVE ON GASOLINE
ALPINE ROCKET
Self-Serve**

2038 Hwy 80 H15-2317

ESTATE

DIAMONDS

We have A Beautiful
1-1/3 Carat
Round Brilliant Cut

**DIAMOND
With Good Color**

It has slight imperfections
not visible to the Naked eye

ONLY \$445.

El Cajon's Family Jeweler
Watches Diamonds



GUARANTEED WATCH REPAIRING
S & H Green Stamps

115. W. Main El Cajon H14-3628

Sailor Aids in Relief

Word from Hongkong says that Ernest G. Pingleton, SK3c, of Alpine, and his 683 shipmates aboard the USS Salisbury, delivered 2 1/2 tons of relief items to weather-stricken parts of Japan, Formosa and Hongkong. He is husband of the former Frances Brown of Viejas Reservation. He has served aboard his vessel since April, 1959, entering the navy in 1954.

Trailer Park Sold Again

The La Granada, 13445 Hwy 80, Glenview, with 51 spaces, which sold last Nov. for \$137,500, has been resold by Mr. and Mrs. C.F. Carlson. Buyer is Katherine E. O'Rourke and Patricia L. Hathaway. Stamps revealed but \$17,000, obviously only a partial figure. This mirrors the steady growth of housing, especially luxury trailer courts toward Alpine.

La Mesans to Build Home

Mr. and Mrs. Harris H. Purdy, of LM, have just bought four acres on Victoria Dr., reports Mrs. Charlene Brown of Alpine Branch, LM Realty. Sellers are the L.F. Herders of Torrance. Purdy is a landscape artist, plans to erect a nice home and beautify the hillside. Mrs. Purdy is a school teacher.

CLASSIFIED ADS IN THE SUN PAY OFF!



RED'S GARAGE IS TOP ON HIS TOTEM POLE OF SIGNS TELLING MOTORISTS OF MANY SERVICES OFFERED BY NEW OWNER OF SHOP. 2435 HWY 80. BUILDING IS NOT NEW TO RALPH FREY. SHOWN BELOW WITH WIFE WANDA. FOR THIS WAS FIRE STATION FOR SEVERAL YEARS AND HE HAS ALWAYS BEEN ACTIVE IN THIS WORK. WAS CAPTAIN ONE SEASON.

Now Open

RED'S GARAGE

Complete GARAGE Service

from TUNE UPS to REBUILDING
AUTO PAINTING BODY WORK

2435 Hwy 80 H15-3618 Alpine

(JUST EAST OF TOWN)



EVERY INCH A TRUCK!

No matter what your particular need — G.M.C.'s full line of models can supply most any unit, tailor made — without compromise.

See the new G.M.C. V-Six Motor — the greatest advance in the last 20 years.

You can, with confidence, EXPECT 200% to 300% GREATER motor life than you have experienced in the past . . .

BALLANTYNE BUICK

300 El Cajon Blvd.

El Cajon

H1 4-3155

Closed Sundays
Open Evenings

A Telephone Call will bring our representative to see you, at your convenience.



Most people do what they are requested to do, successful people do a little more.

**AZTEC
WATER SERVICE**
Pure Spring Water
Coolers Loaned - Free Delivery
H13-1413 Lakeside



HELEN THOMSEN'S
Cafe del Rey Mar

OPEN EVERY DAY
Hours 11:00 P.M.
DE-4-3161

ACCOMMODATIONS FOR
LARGE AND SMALL
PARTIES AND BANQUETS

House of Hospitality
San Diego, California

ARTHUR N. MURLEY, Sr.

Notary Public of the

A & J TV REPAIR Service

Descanso . . H15-2155

WE USE ALL LATEST TESTING
EQUIPMENT. WE REPAIR ANY
MAKE TV, HI-FI OR STEREO.

Prompt, Reliable Service

The Meachum Co.



Complete Line of Home Furnishings
Nationally Advertised Appliances

Inlaid Linoleum Free Delivery Window Shades
Print Linoleum Custom Made
By the Yard Hickory 2-2555 While You Wait

AMPLE FREE PARKING IN REAR

225 W. Main

El Cajon

Bartos from Hawaii

A vacation of two months was pau when Bill Bartos, manager of the McCoy Realty office, 15949 Hwy 80, returned with his wife to their home in IM from the 50th state.

"I've been sailing in and out of Honolulu for 35 years" Bartos says "and we love it. It is a changing, modern city, with large buildings and hotels, but it's the same good old Hawaii". He added that they are now building a huge shopping center on Ala Wai, with parking for 5000 cars!

Mr. and Mrs. Julius Schulke are back from Alpena, Mich., after being gone six weeks. They visited relatives and friends. Mrs. Schulke was born there and he had lived there most of his life. "We had an enjoyable trip" they report, "totalling over 7000 miles, with nice weather all the way."

Mr. and Mrs. Lynn C. Graves and daughter Lisa spent four days of their vacation with Lynn's parents, Mr. and Mrs. Bill Brown of the Highlands. While here they visited San Diego Zoo.

LEGAL NOTICES

ORDINANCE NO. 8

AN ORDINANCE OF THE BOARD OF DIRECTORS OF RIO SAN DIEGO MUNICIPAL WATER DISTRICT GRANTING A PETITION PROPOSING ANNEXATION OF CERTAIN AREAS DESIGNATED AS RIO SAN DIEGO MUNICIPAL WATER DISTRICT NO. 3 ANNEXATION, TO RIO SAN DIEGO MUNICIPAL WATER DISTRICT AND CONCURRENTLY THEREWITH TO SAN DIEGO COUNTY WATER AUTHORITY AND THE METROPOLITAN WATER DISTRICT OF SOUTHERN CALIFORNIA, SUBJECT TO CERTAIN TERMS AND CONDITIONS; DESCRIBING THE TERRITORY SO PROPOSED TO BE ANNEXED; SETTING FORTH THE SAID TERMS AND CONDITIONS FIXED AND IMPOSED BY THE BOARDS OF DIRECTORS OF RIO SAN DIEGO MUNICIPAL WATER DISTRICT, SAN DIEGO COUNTY WATER AUTHORITY AND THE METROPOLITAN WATER DISTRICT OF SOUTHERN CALIFORNIA; GIVING NOTICE, PROCLAIMING AND PROVIDING FOR THE HOLDING OF A SPECIAL MUNICIPAL WATER DISTRICT ELECTION FOR THE PURPOSE OF SUBMITTING TO THE QUALIFIED VOTERS OF SAID TERRITORY THE PROPOSITION OF ANNEXING SAID TERRITORY TO RIO SAN DIEGO MUNICIPAL WATER DISTRICT AND CONCURRENTLY THEREWITH TO SAN DIEGO COUNTY WATER AUTHORITY AND THE METROPOLITAN WATER DISTRICT OF SOUTHERN CALIFORNIA, SUBJECT TO THE TERMS AND CONDITIONS FIXED BY THE BOARD OF DIRECTORS OF RIO SAN DIEGO MUNICIPAL WATER DISTRICT, AND SUBJECT TO THE TERMS AND CONDITIONS FIXED BY THE BOARD OF DIRECTORS OF SAN DIEGO COUNTY WATER AUTHORITY, AND SUBJECT TO THE TERMS AND CONDITIONS FIXED BY THE BOARD OF DIRECTORS OF THE METROPOLITAN WATER DISTRICT OF SOUTHERN CALIFORNIA; ESTABLISHING VOTING PRECINCTS FOR THE PURPOSE OF SUCH SPECIAL ELECTION; DESIGNATING THE POLLING PLACES THEREOF; APPOINTING BOARDS OF ELECTION FOR SAID VOTING PRECINCTS; FIXING THE COMPENSATION OF THE ELECTION OFFICERS; AND, PROVIDING FOR THE CANVASS OF RETURNS OF SAID ELECTION.

BE IT ORDAINED BY THE BOARD OF DIRECTORS OF RIO SAN DIEGO MUNICIPAL WATER DISTRICT, as follows:

WHEREAS, Rio San Diego Municipal Water District, pursuant to Resolution No. 90 passed and adopted March 8, 1960, applied to the Board of Directors of San Diego County Water Authority for consent to annex the lands hereinafter described concurrently with their annexation to Rio San Diego Municipal Water District, and

WHEREAS, the Board of Directors of The Metropolitan Water District of Southern California did adopt its Resolution No. 5754 on August 9, 1960, whereby its consent to such annexation upon certain terms and conditions was granted, and

WHEREAS, the Board of Directors of San Diego County Water Authority did adopt its Resolution No. 620 on August 18, 1960, whereby its consent to such annexation upon certain terms and conditions was granted, and

WHEREAS, the petition of H.R. BESSE, et al, praying for the annexation of lands hereinafter described to Rio San Diego Municipal Water District and their concurrent annexation to San Diego County Water Authority and to The Metropolitan Water District of Southern California, was filed with the Secretary of Rio San Diego Municipal Water District on the 15th day of April, 1960, at five (5) o'clock P.M., and

WHEREAS, the Registrar of Voters in and for the County of San Diego, on the 21st day of April, 1960, issued his certificate that Two Thousand Three Hundred and Ninety-Nine (2,399) voters within the areas seeking to be annexed voted in the last election for the office of Governor of the State of California,

held on the 4th day of November, 1958, and

WHEREAS, the Secretary of the Board of Directors of Rio San Diego Municipal Water District, on the 21st day of April, 1960, issued his certificate that said petition of H.R. BESSE, et al, was signed by Three Hundred and Seventy-Five (375) duly registered voters residing within the areas seeking annexation; that said Three Hundred and Seventy-Five (375) voters comprise at least ten (10) percent of the number of voters within said territory voting for all candidates for the office of Governor of the State of California at the last such election held on the 4th day of November, 1958; that said petition is sufficient, and

WHEREAS, such annexation does appear to be feasible and in the best interests of Rio San Diego Municipal Water District and the areas proposed to be annexed and the residents, citizens and taxpayers thereof;

NOW, THEREFORE, the Board of Directors of Rio San Diego Municipal Water District pursuant to the provisions of Section 27 of the Municipal Water District Act of 1911, as amended, hereby finds, determines and orders as follows:

Section 1. That a petition was filed by H.R. BESSE, et al, with the Secretary of Rio San Diego Municipal Water District on April 15, 1960, seeking annexation of certain unincorporated areas to said Rio San Diego Municipal Water District and concurrently therewith to San Diego County Water Authority and The Metropolitan Water District of Southern California. Said areas seeking to be annexed are designated as Rio San Diego Municipal Water District No. 3 Annexation, Parcel No. 1 and Parcel No. 2, and are more particularly described in Section 2 hereof; that said petition was signed by duly registered voters residing within said areas seeking to be annexed numbering at least ten (10) percentum of the number of such voters voting for all candidates for the office of Governor of this State at the last general election prior to the filing of said petition.

Section 2. That the boundaries of the areas designated as Rio San Diego Municipal Water District No. 3 Annexation sought to be annexed as set forth in said petition are:

**LEGAL DESCRIPTION OF RIO SAN DIEGO
MUNICIPAL WATER DISTRICT NO. 3
ANNEXATION**

PARCEL 1:

All that real property in the County of San Diego, State of California, more particularly described as follows:

Beginning at a point on the boundary of Helix Irrigation District and the San Diego County Water Authority, being a point on Course No. 106 of Parcel 1 of the Boundary Description of Helix Irrigation District, dated January 28, 1958, and recorded January 30, 1958, in Book 6930, at page 359 of the Official Records of the County of San Diego, said point also being at the intersection of the Northern right of way line of the San Diego Flume Company as said Flume is shown on Subdivision of the "S" Tract of the Rancho El Cajon according to map thereof in Book 170, page 71 of Deeds, also as said right of way line is shown on Record of Survey Map No. 1634, on file in the office of the Recorder of said County, with the center line of the road which forms the Easterly and South-easterly boundary of Lots 3, 4 and 5 in Block 41 of said "S" Tract;

Thence along the boundary of said Helix Irrigation District and said San Diego County Water Authority, and along the center line of County Road, as shown on Map No. 1249, filed in the office of the County Recorder, County of San Diego, on April 11, 1910, the following courses:

1. South, 30° West, 277.87 feet;
2. South 5° East, 440 feet;
3. South, 15° West, 1,240 feet;
4. South, 49° West, 480 feet;
5. South, 25° West, 300.00 feet;
6. South, 13° 30' West, 350.00 feet;
7. South, 82° West 200.00 feet.
8. North 71° 50' West, 490.00 feet.
9. South, 73° 10' West, 250.00 feet;
10. South, 42° 40' West, 511.40 feet to the most Easterly corner of a parcel of land described in Deed to Ed Fletcher, recorded March 28, 1910, Book 491, page 54 of Deeds, records of said County;
- Thence, leaving said County Road and continuing along said boundary of Helix Irrigation District and the San Diego County Water Authority the following courses:
11. South, 78° 16' West 311.70 feet to the most Westerly corner of said land conveyed to Ed Fletcher, being also a point on the Northerly line of land described in Deed to A. L. Tadlock and wife, recorded May 3, 1910, in Book 490, Page 220 of Deeds, records of said County and shown on Record of Survey, Map No. 3306, filed March 1, 1954, in the office of the Recorder of said County;
12. North 64° 36' West along said Northerly line of said Tadlock land to the North and Westerly right of way line of the San Diego Flume Company shown on said Map, Subdivision of "S" Tract;
13. In a general Southerly and Westerly direction, along said North and Westerly right of way line of San Diego Flume Company to the Northeasterly line of Lot 2, Block 40, as shown on said Map of the Subdivisions of the "S" Tract;
14. Southeasterly along said Northeasterly line of said Lot 2 to a point distant thereon 447 feet from the Southeasterly line of the San Diego Flume Company's right of way, as said right of way is shown on the Map of the Subdivision of the "S" Tract of the Rancho El Cajon, in Deed Book 170, Page 71, Records of said County;
15. South, 59° 52' West at right angles to the Northeasterly line of said Lot 2, a distance of 314 feet;
16. North 30° 08' West, to an intersection with the center line of the road bounding said Block 40 on the Northwest, as said Block 40 and said road are shown on said Map of the Subdivision of the "S" Tract;
17. Southwesterly along the center line of said road to a point North 43° 50' East 158 feet from the Northwesterly corner of said Lot 2, Block 40;
18. South 24° 52' East 880 feet to a point on the Northwesterly line of said Flume right of way;
19. South 49° 24' West, 157.5 feet along the Northwesterly line of said Flume right of way to a point on the Northeasterly line of Lot 1 of said Block 40;
20. Southeasterly along the Northeasterly line of said Lot 1 and its Southeasterly prolongation to the center line of the road bounding said Lot 1 on the South;
21. Westerly along the center line of said road to a point on the center line of the road

- bounding Lot 3, Block 39, of said Subdivision of the "S" Tract on the East;
22. Southeasterly along the center line of said road bounding said Lot 3 on the East to the Easterly prolongation of the Southerly line of Lot 3, Block 39, of said Subdivision of the "S" Tract;
23. Westerly along said Easterly prolongation and along the Southerly line of said Lot 3 and its Westerly prolongation to an intersection with the center line of the road bounding Block 33 of said Subdivision of the "S" Tract, on the East;
24. Southerly along the center line of said road bounding said Block 33 on the East to a point in a line drawn parallel with and 354.10 feet Southerly at right angles from the Northerly line of Lot 2, Block 39 of said Subdivision of the "S" Tract;
25. Easterly along said parallel line to a point distant thereon 789.08 feet Westerly from the intersection of said parallel line with the Easterly line of said Lot 2;
26. Northerly at right angles to said parallel line, 35.00 feet to a point;
27. Easterly parallel with said parallel line, 105.27 feet to a point;
28. Southerly at right angles to said parallel line, 35.00 feet to a point on said parallel line;
29. Easterly along said parallel line to a point distant thereon 411.00 feet Westerly from the intersection with the Easterly line of said Lot 2;
30. Southerly, parallel to the Easterly line of said Lot 2, to a point in the Southerly line of said Lot 2 and distant thereon 411.00 feet Westerly from the Southeast corner thereof;
31. Easterly along the Southerly line of said Lot 2 to the Northeast corner of Lot 1 of said Block 39;
32. Southerly along the Easterly line of said Lot 1 to the Southeast corner thereof;
33. Southerly in a direct line to the Northeasterly corner of Block 36 of said Subdivision of the "S" Tract;
34. Southeasterly and Southerly along the Easterly line of said Block 36 to the Northerly right of way line of aforesaid San Diego Flume Co.;
- 34A. Southeasterly along said Northerly right of way line of the San Diego Flume Co. to an intersection with the Westerly boundary of Lot 2 of Block 38 of aforementioned Subdivision of the "S" Tract;
35. North 14° 20' West along said Westerly boundary to the most Westerly corner of said Lot 2;
- 35A. North 34° 35' East 258.8 feet;
36. South 86° 10' East 343.8 feet;
37. North 12° 7' West 227.2 feet;
38. North 63° 10' East 122.3 feet;
39. North 77° 36' East 252.1 feet;
40. South 81° 38' East 124.1 feet;
41. South 9° 23' West 171.8 feet;
42. South 66° 0' East 376.8 feet;
43. North 47° 11' East 163.8 feet;
44. South 40° 57' East 123.8 feet;
45. South 8° 48' West 382.0 feet;
46. South 32° 06' East 234.8 feet;
47. South 17° 48' West 235.2 feet;
48. South 55° 41' West 139.0 feet;
49. South 28° 19' West 208 feet more or less to an intersection with the center line of that certain County road shown on the Map of Road Survey No. 435 filed in the office of

- the County Surveyor of said County;
50. Southwesterly along said center line to an intersection with the Northeasterly line of that certain tract of land conveyed to C. O. Nichols by deed recorded in Book 1159, Page 262, of Deeds, Records of said County;
51. Southeasterly along the Northeasterly line of land so conveyed to the most Easterly corner thereof;
- 51A. North 62° 02' East (record North 66° 03' East) to the Northeasterly line of Block 36 of said Subdivision of the "S" Tract;
52. Southeasterly along said Northeasterly line of Block 36 and the Southeasterly prolongation thereof to its intersection with the center line of the road lying between Blocks 35 and 36 as shown on said Map of the Subdivisions of the "S" Tract;
53. Southwesterly along the center line of said road to the center line of the road bounding Block 34 on the North;
54. Southeasterly along the center line of said road to the Easterly prolongation of the Southerly line of Lot 4 of Block 34;
55. Southwesterly along the said Easterly prolongation and along the Southerly line of said Lot 4 to the Easterly line of the Cuyamaca Water Company's Flume right of way;
56. Southeasterly and Southwesterly along said Easterly line of the Cuyamaca Water Company's Flume right of way to an intersection with the Northerly line of Lot 1 of Block 34 of said Subdivision of the "S" Tract;
57. Northeasterly along said Northerly line of said Lot 1 to the most Northerly corner thereof;
58. Southerly along the Easterly line of said Lot 1 to an intersection with the Southeasterly line of aforesaid Subdivision of the "S" Tract;
59. Northeasterly along said Southeasterly line of said Subdivision of the "S" Tract to an intersection with the Easterly line of the El Cajon Valley Homelands as shown on Map thereof No. 1177, Records of said County;
60. Southerly along the Easterly line of said El Cajon Valley Homelands to a point from whence the Southwest corner of the Northeast Quarter of the Southeast Quarter of Section 8, Township 16 South, Range 1 East, S. B. B. M., bears South 1° 22' West, 891 feet;
61. South 89° 55' East, 126.59 feet;
62. South 36° 58' East, 127.50 feet;
63. North 73° 46' East, 149.50 feet;
64. South 62° 46' East, 76 feet;
65. North 76° 30' East, 169 feet;
66. North 43° 50' East, 246.7 feet;
67. North 77° 26' East, 506 feet;
68. South 62° 48' East, 97 feet;
69. South 88° 38' East, 396 feet;
70. South 60° 0' East, 87 feet;
71. South, 32° 59' East, 263.71 feet;
72. South, 1° 22' West, 134.30 feet;
73. North, 89° 55' West, 906.58 feet;
74. South, 1° 22' West 630.00 feet;
75. North, 89° 55' West, 1,050 feet to the East line of the aforesaid El Cajon Valley Homelands, according to said Map No. 1177;
76. Southerly along said East line to an intersection with the Northerly line of the Southerly 330 feet of the Southeast Quarter of the Southeast Quarter of Section 8, Township 16 South, Range 1 East, S. B. B. M.;
77. Easterly along said Northerly line to the East line of said Section 8;
78. Southerly along said East line of Section 8 to its intersection with the Northerly line of the Southerly 218 feet of the Southwest Quarter of Fractional Section 9, Township 16 South, Range 1 East, S. B. B. M., said intersection being an angle point in the boundary line of Otay Municipal Water District;
- Thence leaving the boundary of Helix Irrigation District and continuing along the boundary of Otay Municipal Water District and the San Diego County Water Authority the following courses:
79. Easterly along said Northerly line of the Southerly 218 feet of said Fractional Section 9, to the center line of Road Survey No. 675, as shown on Sheet 4 of 4 sheets, filed in Book 3, Page 314 of Miscellaneous Maps in the office of said Recorder;
80. Southwesterly along said center line of Road Survey No. 675 to the South line of said Fractional Section 9;
81. Thence leaving the boundary of said San Diego County Water Authority and the Otay Municipal Water District, Easterly along the South line of said Fractional Section 9 to the West line of Section 15, Township 16 South, Range 1 East, S. B. B. M.;
82. Thence Southerly along said West line of Section 15, to that certain line shown on Miscellaneous Map No. 318, filed in the office of the Recorder of San Diego County, as the adjudicated line between the Northwest Quarter of Southwest Quarter and the Southwest Quarter of Northwest Quarter of said Section 15, as per Superior Court Case No. 13522;
83. Thence South 89° 58' 04" East along said adjudicated line 1234.01 feet;
84. Thence South 0° 59' 51" East 102.15 feet to the South line of said Northwest Quarter of Section 15;
85. Thence South 85° 35' 45" East along said South line 1414.80 feet to the North and South centerline of said section 15;
86. Thence North, along said North-South center line of Section 15 to the East-West center line of the North half of said Section 15;
87. Thence Easterly along said East-West center line of the North half of Section 15 and along the East-West center line of the North half of Section 14, Township 16 South, Range 1 East, S. B. B. M., to the North-South center line of said Section 14;
88. Thence Southerly along said North-South centerline of said Section 14, to the East-West center line of said Section 14;
89. Thence Easterly along said East-West center line of said Section 14, to the West line of the Northeast Quarter of the Southeast Quarter of said Section 14;
90. Thence Southerly along said West line of the Northeast Quarter of the Southeast Quarter of Section 14 to the South line of said Northeast Quarter of the Southeast Quarter of Section 14;
91. Thence Easterly along said South line of the Northeast Quarter of Southeast Quarter of Section 14, to the East line of said Section 14;
92. Thence Northerly along said East line of Section 14, to the Southerly line of Section

12. Township 16 South, Range 1 East, S. B. B. M.
93. Thence Easterly, along said Southerly line of Section 12 to the Range line between Range 1 East and Range 2 East S. B. B. M.;
94. Thence Southerly along said Range line to the South line of Lot 2 of Section 18 Township 16 South, Range 2 East, S. B. B. M.; as shown on Township Plat 16 South, Range 2 East S. B. B. M., dated September 4, 1880, on file in the U. S. Surveyor General's Office, San Francisco, California
95. Thence Easterly along said South line of Lot 2, being also the South line of the Northwest Quarter of said Section 18 to the North-South center line of said Section 18.
96. Thence South, along said North-South center line of Section 18, to the South line of the North half of the Southeast Quarter of Section 18;
97. Thence Easterly, along said South line of the North half of the Southeast Quarter of Section 18, to the East line of said Section 18;
98. Thence North, along said East line of Section 18, to the South line of the Northwest Quarter of the Northwest Quarter of Section 17, Township 16 South, Range 2 East, S. B. B. M.;
99. Thence Easterly, along said South line of the Northwest Quarter of the Northwest Quarter of Section 17, to the East line of said Northwest Quarter of the Northwest Quarter of Section 17;
100. Thence North, along said East line of the Northwest Quarter of the Northwest Quarter of Section 17 to the North line of said Section 17;
101. Thence Westerly, along said North line of said Section 17 and along the North line of aforesaid Section 18, to the North-South center line of Section 7, Township 16 South, Range 2 East, S. B. B. M.;
102. Thence North along said North-South center line of section 7 to the South line of section 6, as shown on said Township plat 16 South, Range 2 East S. B. B. M.;
103. Thence Easterly, along the Southerly lines of Sections 6, 5, 4 and 3, Township 16 South, Range 2 East, S. B. B. M. to the North-South center line of said Section 3;
104. Thence North, along said North-South center line of Section 3, to the East-West center line of said Section 3;
105. Thence Easterly, along said East-West center line of said Section 3, to the Westerly line of Section 2, Township 16 South, Range 2 East, S. B. B. M.;
106. Thence Southerly, along said Westerly line of Section 2, to the Southerly line of the North half of the Southwest Quarter of said Section 2;
107. Thence Easterly, along said Southerly line of the North half of the Southwest Quarter of Section 2, to the North-South center line of said Section 2;
108. Thence Northerly, along said North-South center line of Section 2, to the Southerly line of Lot 2 of said Section 2, as shown on aforesaid Township Plat 16 South Range 2 East, S. B. B. M.;
109. Thence Easterly, along said Southerly line of Lot 2 and along the Southerly line of
- Lot 1 of said Section 2, to the Easterly line of said Section 2;
110. Thence Northerly, along said Easterly line of Section 2, to the Township line between Township 15 South and Township 16 South, Range 2 East, S. B. B. M.;
111. Thence along said Township line to the Easterly line of Section 35, Township 15 South, Range 2 East, S. B. B. M.; as shown on Township Plat 15 South, Range 2 East, dated December, 12, 1881 on file in the U. S. Surveyor General's office, San Francisco California;
112. Thence Northerly, along said Easterly line of Section 35, to the Southerly line of the Northwest Quarter of the Northwest Quarter of Section 36, Township 15 South, Range 2 East, S. B. B. M.;
113. Thence Easterly, along said Southerly line of the Northwest Quarter of the Northwest Quarter of said Section 36 to the Easterly line of said Northwest Quarter of the Northwest Quarter of Section 36;
114. Thence Northerly along said Easterly line of the Northwest Quarter of the Northwest Quarter of Section 36 and continuing Northerly along the Easterly line of the West half of the Southwest Quarter of Section 25, Township 15 South, Range 2 East, S. B. B. M. to the East-West center line of said Section 25;
115. Thence Westerly along said East-West center line of Section 25, to the Easterly line of Section 26, Township 15 South, Range 2 East, S. B. B. M.;
116. Thence Northerly, along said Easterly line of Section 26 and continuing Northerly along the Easterly line of Section 23, Township 15 South, Range 2 East, S. B. B. M., to the Northerly line of the South half of Section 23;
117. Thence Westerly along said Northerly line of the South half of Section 23, to the Easterly line of Section 22, Township 15 South, Range 2 East, S. B. B. M.;
118. Thence Northerly, along said Easterly line of Section 22, to the Northerly line of said Section 22;
119. Thence Westerly, along said Northerly line of Section 22, to the Easterly line of the West half of the Southeast Quarter of Section 15, Township 15 South, Range 2 East, S. B. B. M.
120. Thence Northerly along said Easterly line of the West half of the Southeast Quarter of Section 15, and along the Easterly line of the Southwest Quarter of the Northeast Quarter of Section 15 to the North line of the Southwest Quarter of the Northeast Quarter of Section 15;
121. Thence Westerly, along said North line of the Southwest Quarter of the Northeast Quarter of Section 15, and continuing along the North line of the Southeast Quarter of the Northwest Quarter of Section 15, to the West line of the Southeast Quarter of the Northwest Quarter of Section 15;
122. Thence Southerly, along said West line of the Southeast Quarter of the Northwest Quarter of Section 15, to the East-West center line of Section 15;
123. Thence Westerly, along said East-West center line of Section 15, and continuing along the East-West center line of

- Section 16, Township 15 South, Range 2 East, S. B. B. M. to the Westerly line of said Section 16;
124. Thence Southerly, along said Westerly line of Section 16, to the Northerly line of Section 20, Township 15 South, Range 2 East, S. B. B. M.;
125. Thence Westerly, along the Northerly line of Section 20, to the Easterly line of the Northeast Quarter of the Northwest Quarter of Section 20, Township 15 South, Range 2 East, S. B. B. M.;
126. Thence Southerly, along said Easterly line of the Northeast Quarter of the Northwest Quarter of Section 20, to the Southerly line of said Northeast Quarter of the Northwest Quarter of Section 20;
127. Thence Westerly along said Southerly line of the Northeast Quarter of the Northwest Quarter of Section 20, to the Westerly line of said Northeast Quarter of the Northwest Quarter of Section 20;
128. Thence Northerly along said Westerly line of the Northeast Quarter of the Northwest Quarter of Section 20, to the Southerly line of Section 17, Township 15 South, Range 2 East, S. B. B. M.;
129. Thence Westerly, along said Southerly line of Section 17, to the Easterly line of Section 19, Township 15 South, Range 2 East, S. B. B. M.;
130. Thence Southerly, along said Easterly line of Section 19 to the Easterly prolongation of the Southerly line of Lot 1 of said Section 19;
131. Thence Westerly along said Easterly prolongation and along said Southerly line of Lot 1 to the Westerly line of Section 19, Township 15 South, Range 2 East, S. B. B. M.
132. Thence Southerly, along said Westerly line of Section 19, to Corner No. 12 of Rancho El Cajon, as shown on Record of Survey Map No. 3010 filed March 2, 1953, in the office of the Recorder of said County, said corner No. 12 being also the most Easterly corner of the boundary of the first parcel of land conveyed to Ed Fletcher Co. by Deed dated March 19, 1942, filed in Book 1466, Pages 288 and 289 in the Official Records of said County;
- Thence along said boundary of the first parcel of land conveyed to Ed Fletcher Co., the following courses:
133. South 48°07' West along the Southeasterly line of said Rancho El Cajon as shown on said Record of Survey Map No. 3010, to the most Southerly line of said first parcel;
134. Leaving said Rancho El Cajon boundary South 86°55'50" West along said most Southerly line to the Southwest corner of said first parcel;
135. North 12°39'11" West 1320.00 feet to the Northwest corner of said first parcel, said corner being also a point on the Southerly line of the last parcel of land conveyed to Ed. Fletcher Co. by aforesaid Deed dated March 19, 1942, filed in Book 1466, Pages 288 and 289 in Official Records of said County;
136. Thence, leaving said first parcel South 86°55'50" West, 944.35 feet along said Southerly line of said last parcel to the Westerly line thereof;
137. Thence North 1°00' West along said Westerly line to a point on a curve having a
- radius of 200.00 feet, which is along the Southerly line of a 1.9 acre parcel as shown on the Record of Survey Map No. 2304 filed October 10, 1949, in the Office of the Recorder of said County;
- Thence leaving said boundary of land conveyed to Ed Fletcher Co. and proceeding along the Southerly line of said 1.9 acre parcel shown on Record of Survey Map No. 2304, the following courses:
138. Southwesterly along the arc of said curve through a central angle 9°15'03" a distance of 40.36 feet to a tangent point on said curve;
139. South, 58°57'05" West, 204.52 feet to the most Southerly corner of said 1.9 acre parcel as shown on said Record of Survey;
140. Thence leaving said 1.9 acre parcel Westerly along an arc of a curve through a central angle of 58°46'50" a distance of 102.59 feet, to the most Easterly corner of a 1.0 acre parcel as shown on aforesaid Record of Survey Map No. 2304;
141. Thence South, 21°28'25" West, 195.78 feet along the Easterly line of said 1.0 acre parcel to the Southerly line of said parcel;
142. Thence South, 80°46'10" West, 95.96 feet along said Southerly line of the 1.0 acre parcel to the Westerly line of said 1.0 acre parcel;
143. Thence North, 18°02'50" West, 275.18 feet along said Westerly line to the Southerly boundary of the 1.22 acre parcel as shown on the Record of Survey Map No. 1707, filed January 21, 1948, in the Office of the County Recorder of said County;
144. Thence leaving said 1.0 acre parcel South, 71°57'10" West, 172.07 feet along said Southerly boundary of the 1.22 acre parcel to an intersection with the Easterly line of 1.0 acre parcel as shown on said Record of Survey Map No. 1707;
145. Thence South, 18°02'50" East, 248.42 feet along said Easterly line of the 1.0 acre parcel to the Southerly line of said 1.0 acre parcel, as shown on said Record of Survey No. 1707;
146. Thence South, 80°46'10" West, 185.49 feet along said Southerly line to the most Westerly line of said 1.0 acre parcel;
147. Thence North, 26°42'10" West, 195.51 feet along said Westerly line of the 1.0 acre parcel to the Southerly line of the aforementioned 1.22 acre parcel as shown on the Record of Survey Map No. 1707;
148. Thence leaving the boundary of said 1.0 acre parcel South, 63°17'50" West, 30 feet more or less, along said Southerly line of the 1.22 acre parcel to the most Southwesterly corner of said parcel, being also the most Easterly corner of a 1.10 acre parcel as shown on said Record of Survey Map No. 1707;
- Thence along the boundary of said 1.10 acre parcel the following courses as shown on said Record of Survey Map No. 1707.
149. South 63°17'50" West, 12.71 feet to the beginning of a tangent curve having a radius of 200 feet;
150. Southwesterly along the arc of said curve through a central angle of 22°04'30" a distance of 77.06 feet to a point on tangent;
151. South 41°13'20" West, 77.74 feet;
152. North, 52°16'20" West, 291.48 feet, to the Northerly line of said 1.10 acre parcel;
153. North, 69°53'50" East, 51.67 feet along said Northerly line to the beginning of a tangent

- curve to the right having a radius of 500 feet;
154. Easterly along the arc of said curve through a central angle of 9°01'40" a distance of 78.78 feet;
155. North, 78°55'30" East, 8.69 feet to the most Southerly corner of Record of Survey Map No. 1203 filed October 10, 1945, in the Office of the Recorder of said County;
156. Thence leaving said boundary of the 1.10 acre parcel as shown on said Record of Survey Map No. 1707 North, 2°54' West a distance of 50.21 feet to the Southerly line of the Wahl Tract as shown on said Record of Survey Map No. 1203;
157. Thence South, 78°55'30" West, 25.26 feet to the Southerly terminus of that certain line shown as having a bearing and distance of North 2° 45' West 393.34 feet on said Record of Survey Map No. 1203, being also the Southeastery corner of a 7.00 acre parcel shown on Record of Survey Map No. 1757 filed March 18, 1948, in the Office of the County Recorder of said County;
158. Thence South, 78°55'30" West, 598.50 feet along the Southerly boundary of said 7.00 acre parcel shown on Record of Survey Map No. 1757 to an angle point, said angle point being also an angle point in the Southerly line of a parcel of land conveyed to H. Wahl by Deed dated October 14, 1909 on file in Deed Book 481, Page 68; Thence along said Southerly line of the land so conveyed to H. Wahl, the following courses:
159. South, 68°00' West, 400 feet;
160. South, 24°00' West, 200 feet;
161. South, 71°40' West, 1,022 feet;
162. South, 82°30' West, 635 feet;
163. South, 77°00' West, 1,115 feet;
164. North, 89°30' West, 882.8 feet to an intersection with the Easterly line of that certain tract marked "W. E. Flynn" on said Map of Subdivision "S" Tract, Rancho El Cajon;
165. Thence leaving said Southerly line of the land so conveyed to H. Wahl Southerly along said Easterly line to the Southerly line of said "W. E. Flynn" Tract;
166. Thence South 89°52' West along said Southerly line to the most Easterly corner of a parcel of land conveyed to Ed Fletcher by Deed dated January 24, 1919, on file in Deed Book No. 777, Page 11, in the Office of the County Recorder of said County;
167. Thence South, 29°56' West, 290.20 feet along the Southeastery line of said parcel so conveyed to Ed Fletcher to the Southerly prolongation of the Westerly line of aforesaid "W. E. Flynn" Tract;
168. Thence Southerly along said Southerly prolongation of the Westerly line of "W. E. Flynn" Tract to the most Southerly line of a parcel of land conveyed to the Grossmont Park Company by deed dated October 28, 1929 on file in Book No. 1690, Page 420 of the Deeds Records of said County;
169. Thence South, 84°38' West, 1,530 feet more or less, along said Southerly line of the parcel so conveyed to Grossmont Park Company to a point on the Easterly boundary of Los Coches Subdivision #2,

as shown on Map No. 1582 filed June 20, 1913 in the Office of the County Recorder of said County;

170. Thence South, 27°45' East along said Easterly boundary to the Southerly line of said Los Coches Subdivision #2; Thence proceeding along said Southerly line of Los Coches Subdivision #2, the following courses as shown on said Map No. 1582:
171. South, 50°36' West, 322.3 feet;
172. North, 87°11' West, 1,447.9 feet;
173. South, 76°59' West, 812.6 feet;
174. South, 69°54' West, 392.1 feet;
175. South, 53°54' West, 177.1 feet;
176. South, 44°52' West, 345 feet;
177. South, 47°03' West, 400 feet to an intersection with the Northeastery line of land conveyed to Walter J. Davis by deed dated August 3, 1912 and recorded in Book 565 Page 363 of Deeds Records of said County;
178. Thence leaving the Southerly line of said Los Coches Subdivision #2, Southeastery along said Northeastery line of land so conveyed to Walter J. Davis to the most Easterly corner thereof, said corner being also the Northeastery corner of Parcel 1 of land conveyed to Howard W. Porfiris and Cardwell D. Porfiris by deed dated July 9, 1954 recorded in Book 5304, Page 209 of the Official Records of San Diego County;
179. Thence South 42°25'15" East, 653.80 feet along the Easterly line of land so conveyed to Howard W. Porfiris and Cardwell D. Porfiris to the most Easterly corner of said parcel 1 of said conveyance, said most Easterly corner being also the most Northerly corner of a parcel of land conveyed to Hills, Arthur Clarke and Dora A. by deed dated January 23, 1941, recorded in Book 1140, Page 62 of the Official Records of said County;
180. Thence South, 27°57' East, along the Easterly line of said parcel of land conveyed to Hills, to the Southeastery corner thereof, said Southeastery corner being also the Northeastery corner of a parcel of land conveyed to Lawrence, Fred and Nellie, by Deed dated April 28, 1944, recorded in Book 1722, Page 144 of the Official Records of said County;
181. Thence continuing South, 27°57' East, along the Easterly line of said parcel of land conveyed to Lawrence, to the Southeast corner thereof;
182. Thence continuing South, 27°57' East, to an angle point in the Northerly boundary of Record of Survey No. 1333, filed August 29, 1946 in the Office of the County Recorder of said County;
- Thence proceeding along the Northeastery boundary of said Record of Survey No. 1333 the following courses:
83. North, 73°36'20" East, 244.75 feet;
184. South, 47°18'30" East, 353.00 feet;
185. South, 63°20'20" East, 538.76 feet to the most Northerly corner of the boundary of Record of Survey No. 1335 filed August 29, 1946 in the Office of the County Recorder of said County;
- Thence proceeding along the boundary of said Record of Survey No. 1335, the following courses:
186. South, 62°42' East, 455.35 feet;
187. South, 87°16'40" East, 902.03 feet to the

Easterly line thereof;

188. South, 21°47' West, 706.13 feet along said Easterly line to the most Southeastery corner of said Record of Survey Map No. 1335;
189. Thence leaving said boundary of Record of Survey No. 1335, South 21°47' West, along the Southerly prolongation of said Easterly line to an intersection with the Southerly line of a parcel of land described as an exception to a deed conveying land to Owen Wister, filed in Book 574, Page 17 of Deeds Records of San Diego County, said exception to the deed being described as follows:
- "Also excepting from said Lots Forty-eight (48) and Forty-nine (49) those portions thereof described as follows:
- Commencing at a point on the Southerly line of the El Monte Rancho, according to Map thereof No. 1146 filed in the Office of the County Recorder of said San Diego County August 26th, 1908, and on a line between Stations 22 and 23 of said Rancho, which is distant South 59°09' West 98.5 feet from Station No. 23 of said Rancho; thence South 21°26' East 1623.45 feet; thence South 27°57' East 1795.3 feet; thence South 66°57' East 2275.6 feet; thence South 69°57' East 507.1 feet; thence South 77°57' East 843.6 feet; thence South 0°52' West 301.3 feet; thence South 80°33' West 3758.0 feet; thence North 64°58' West 3929.4 feet; thence North 43°30' West 1460 feet; thence North 29°10' West 952 feet to the Southerly line of the right of way of the San Diego Flume Company, as the same is now located; thence following said Southerly right of way line of said Flume Company in an Easterly and Northerly direction to its intersection with the Southerly line of said El Monte Rancho from whence Station No. 18 of said Rancho bears North 73°50' East 23.5 feet; thence North 73°50' East 23.5 feet to Station No. 18 of said Rancho; thence along the Southerly line of said Rancho South 85°32' East 490 feet to Station No. 19; thence North 79°11' East 450.2 feet to Station No. 20; thence North 63°34' East 325 feet to Station No. 21; thence North 32°09' East 430 feet to Station No. 22; thence North 59°09' East 547.5 feet more or less to point of commencement."
190. Thence South, 80°33' West along said Southerly line to its first intersection with the boundary of a 4.00 acre parcel shown on Record of Survey Map No. 1510, filed June 5 1947 in the Office of the County Recorder of said County;
- Thence proceeding along the boundary of said 4.00 acre parcel the following courses:
191. Southerly to the Southeastery corner thereof;
192. South 89°53' West, 456.78 feet, to the Southwesterly corner thereof;
193. North, 0°07' West, to an intersection with the Southerly boundary of the aforementioned exception to the land so conveyed to Wister;
- Thence leaving said boundary of said 4.00 acre parcel shown on Record of Survey No. 1510 and proceeding along the Southerly line of said exception to the land so conveyed to Wister, the following courses:
194. South 80°33' West to the most Southerly corner of said Wister exception;
195. North, 64°58' West, 3,929.4 feet;

196. North, 43°30' West, 1,460 feet;

197. North 29°10' West, 952 feet to the most Westerly corner thereof;
198. Thence leaving the boundary of said exception of the land so conveyed to Wister, North 29°10' West, to an intersection with the Northerly and Westerly line of the San Diego Flume Company right of way as shown on said Map of the Subdivision of "S" Tract of Rancho El Cajon, said intersection being a point on the boundary of the Helix Irrigation District and the San Diego County Water Authority;
199. Then Southwesterly along said boundary of the Helix Irrigation District and the San Diego County Water Authority, being also along said Northerly and Westerly line of the San Diego Flume Company right of way to the point of beginning.
- Excepting from the above territory all the property contained within the boundaries described as follows:

EXCEPTION, NO. 1 - TO PARCEL 1

- The Crest Public Utility District territory, as included in the boundaries of the La Mesa, Lemon Grove and Spring Valley Irrigation District (now Helix Irrigation District) on August 3, 1948, and annexed to the San Diego County Water Authority and The Metropolitan Water District of Southern California on November 19, 1948, described as follows:
- All that portion of Sections three (3) and ten (10) Township Sixteen (16) South, Range (1) East, San Bernardino Base and Meridian, in the County of San Diego, State of California, according to United States Government Survey, more particularly described as follows:
- Beginning at the Southwest corner of the Southeast Quarter of Northwest Quarter of said Section 3; thence Northerly along the West line of said Southeast Quarter of Northwest Quarter to the Northwest corner thereof;
 - Thence Easterly along the North line of said Southeast Quarter of Northwest Quarter and along the North line of the Southwest Quarter of Northeast Quarter of said Section 3 to the Southwest corner of the East half of Northwest Quarter of Northeast Quarter of said Section 3;
 - Thence Northerly, along the West line of said East half to the Northwest corner of said East Half of Northwest Quarter of Northeast Quarter;
 - Thence Easterly along the North line of said East Half of Northwest Quarter of Northeast Quarter to the Northeast corner thereof;
 - Thence Easterly along the North line of the Northeast Quarter of Northeast Quarter of Section 3, a distance of 512.00 feet;
 - Thence Southerly and parallel with the West line of said Northeast Quarter of Northeast Quarter to an intersection with the North line of the Southeast Quarter of Northeast Quarter of said Section 3;
 - Thence Easterly, along said North line to the Northeast corner of said Southeast Quarter of Northeast Quarter;
 - Thence Southerly, along the East line of said Southeast Quarter of Northeast Quarter to the Southeast corner thereof;
 - Thence Southerly along the East line of the

Northeast Quarter of Southeast Quarter of said Section 3 to the Southeast corner of the North Hall of said Northeast Quarter of Southeast Quarter;

10. Thence Westerly along the South line of said North Half of Northeast Quarter of Southeast Quarter to the West line of said Northeast Quarter of Southeast Quarter;
11. Thence Southerly, along the West line of said Northeast Quarter of Southeast Quarter, along the West line of the Southeast Quarter of Southeast Quarter of said Section 3 and along the West line of the Northeast Quarter of Northeast Quarter of said Section 10, to the Southeast corner of the Northwest Quarter of Northeast Quarter of said Section 10;
12. Thence Westerly, along the South line of said Northwest Quarter of Northeast Quarter of Section 10, to the Southwest corner of said Northwest Quarter of Northeast Quarter of Section 10;
13. Thence Northerly, along the West line of said Northwest Quarter of Northeast Quarter of Section 10, to the Southeast corner of the Southeast Quarter of Southwest Quarter of said Section 3;
14. Thence Westerly, along the South line of said Southeast Quarter of Southwest Quarter of Section 3, and along the South line of the Southwest Quarter of Southwest Quarter of said Section 3, to the Southwest corner of said Southwest Quarter of Southwest Quarter of Section 3;
15. Thence Northerly along the West line of said Southwest Quarter of Southwest Quarter of Section 3 a distance of 330.07 feet;
16. Thence Easterly, and parallel with the South line of said Section 3 to an intersection with the West line of the Southeast Quarter of Southwest Quarter of said Section 3;
17. Thence Northerly, along the West line of said Southeast Quarter of Southwest Quarter of said Section 3 and along the West line of the Northeast Quarter of Southwest Quarter of said Section 3, to the Southwest corner of aforesaid Southeast Quarter of Northwest Quarter of said Section 3, and the point of beginning.

PARCEL 2:

All that unincorporated territory situated in the County of San Diego, State of California, and the boundaries thereof are particularly described as follows:

Beginning at the Northeast corner of Lot 210 of El Cajon Valley Co.'s lands as shown on Map No. 289, on file in the office of the Recorder of San Diego County, said corner being also an angle point designated Post C-4 on plat of Rancho El Cajon, filed in Book 1, Page 303 of Patents, in the office of the Recorder of said County, said corner also being an angle point in the boundary of the Rio San Diego Municipal Water District, organized and incorporated as a municipal water district on the 23rd day of November 1955, and being also the Southwesterly corner of Section 31, Township 14 South, Range 1 East, S. B. B. M., as shown on said Township Map dated 1881 on file in the U. S. Surveyor General's Office, San Francisco, California and being also the Northwesterly corner of Fractional Section 6 Township 15 South, Range 1 East, S. B. B. M., as shown on said Township Map dated May 20, 1881, on file in the U. S. Surveyor General's Office, San Francisco, California;

1. Thence leaving said angle point on the boundary of Rio San Diego Municipal Water District, Easterly along the Northerly line of said Fractional Section 6, being also the Southerly line of said Section 31 to the East line of Lot 4 of said Section 31;

2. Thence Northerly along said East line of Lot 4 and continuing Northerly along the East line of Lot 3 of said Section 31 to the East and West centerline of said Section 31, as said East and West centerline is shown on Record of Survey Map No. 3677 filed in the office of the Recorder of San Diego County;

3. Thence Easterly along said East and West centerline of Section 31 to the West line of Section 32, Township 14 South Range 1 East, S. B. B. M., as said Section 32 is shown on licensed Surveyor's Map No. 412, filed in the office of the Recorder of said San Diego County;

4. Thence Southerly along said West line of Section 32 to the East and West centerline of the South Half of said Section 32;

5. Thence Easterly along said East and West centerline of the South Half of said Section 32 to the Easterly line thereof;

6. Thence Southerly along said Easterly line to the Southeasterly corner of said Section 32 being also the Northwesterly corner of Fractional Section 4, Township 15 South, Range 1 East, S. B. B. M.;

7. Thence Easterly along the Northerly line of said Fractional Section 4, to an intersection with the center line of a county road, 60 feet wide as shown on Road Survey No. 826, on file in the office of the County Recorder of San Diego County as Miscellaneous Map No. 351.

8. Thence Southwesterly along said center line of Road Survey No. 826, following all of its various courses to the Northerly line of said Rancho El Cajon, being also a point in the boundary of said Rio San Diego Municipal Water District;

9. Thence Southwesterly along said boundary of the Rio San Diego Municipal Water District, being also along said Northerly line of Rancho El Cajon to an angle point designated Post C-3 on said plat of the Rancho El Cajon, said angle point being also the most Easterly corner of Lot 157 of said El Cajon Valley Co.'s Lands, also being an angle point in the boundary of said Rio San Diego Municipal Water District;

10. Thence Northwesterly along said boundary line of Rancho El Cajon, being also along the Easterly line of said El Cajon Valley Co.'s Lands, and being also along the boundary of said Rio San Diego Municipal Water District to the point of beginning.

The boundaries of Otay Municipal Water District, Helix Irrigation District, Rio San Diego Municipal Water District and the San Diego County Water Authority referred to herein, are such boundaries as the same existed at 12:00 o'clock on March 1, 1960, unless otherwise indicated.

CON T I N U E D

Section 3. That the Board of Directors of Rio San Diego Municipal Water District, subject to the terms and conditions hereinafter set forth in full in this Ordinance, does hereby grant the petition of H.R. BESSE, et al, for annexation of said lands hereinabove described and the concurrent annexation of said lands to San Diego County Water Authority and The Metropolitan Water District of Southern California.

Section 4. That the terms and conditions upon which such annexation may occur are as follows:

(a) That the terms and conditions of said annexation as herein set forth be approved by the majority of the voters voting at a Special Water District Election to be held at the time and place hereinafter set forth;

(b) That in the event of such annexation all pipelines, structures, connections and other facilities required for delivery of water in said lands from works, pipelines or other facilities owned or operated by Rio San Diego Municipal Water District, shall be constructed, provided and installed without cost or expense to Rio San Diego Municipal Water District, and Rio San Diego Municipal Water District shall be under no obligation to provide, construct or maintain such works;

(c) That in the event of such annexation:

(1) There shall be levied by Rio San Diego Municipal Water District special taxes upon taxable property within said areas in addition to the taxes elsewhere in the Municipal Water District Act of 1911, as amended, provided and authorized to be levied by Rio San Diego Municipal Water District;

(2) The aggregate amount to be raised by such special taxes shall be \$56,926.00;

(3) The number of years prescribed for raising such aggregate sum shall be five (5) years, commencing with the fiscal year 1961-62;

(4) Substantially equal annual levies will be made for the purposes of raising said sum over the period so prescribed.

(d) That in the event of such annexation and thereafter, a special water rate may be fixed from time to time by the Board of Directors of Rio San Diego Municipal Water District for the areas so annexed.

(e) That the terms and conditions fixed by the Board of Directors of San Diego County Water Authority upon which such annexation may occur to said San Diego County Water Authority, as set forth in said Resolution No. 620 adopted by the Board of Directors of said San Diego County Water Authority on August 18, 1960, be fully and completely complied with; that the terms and conditions so fixed and established by the Board of Directors of said San Diego County Water Authority are in substance as follows:

1. That said territory shall be annexed to the Rio San Diego Municipal Water District and to The Metropolitan Water District of Southern California concurrently with its annexation to the San Diego County Water Authority, and that such annexation shall be completed and all necessary certificates, affidavits, statements and maps required to be filed by or on behalf of the Rio San Diego Municipal Water District to effectuate such annexation shall be filed in the manner required by law on or before November 1, 1960.

2. That the terms and conditions fixed by the Board of Directors of The Metropolitan Water District of Southern

California upon which such annexation may occur to said Metropolitan Water District, as hereinabove in this resolution recited and as determined by said Resolution No. 5754 adopted by the Board of Directors of said Metropolitan Water District on August 9, 1960, be fully and completely complied with.

3. That in the event of such annexation:

a. There shall be levied by said San Diego County Water Authority special taxes upon taxable property within said territory, in addition to the taxes elsewhere in the County Water Authority Act authorized to be levied by said Authority;

b. The aggregate amount to be raised by such special taxes shall be \$57,100.00;

c. The number of years prescribed for raising such aggregate sum shall be ten years, commencing with the fiscal year 1961-1962; and

d. Substantially equal annual levies will be made for the purpose of raising said sum over the period so prescribed.

4. That in the event of such annexation all feeder pipe lines, structures, connections and other facilities required for the delivery of water to the said territory from the works owned or operated by the San Diego County Water Authority shall be constructed, provided and installed without cost or expense to the San Diego County Water Authority, which shall be under no obligation to provide, construct, operate or maintain such works.

(f) That the terms and conditions fixed by the Board of Directors of The Metropolitan Water District of Southern California upon which such annexation may occur to said The Metropolitan Water District of Southern California, as set forth in said Resolution No. 5754 adopted by the Board of Directors of said The Metropolitan Water District of Southern California on August 9, 1960, be fully and completely complied with; that the terms and conditions so fixed and established by the Board of Directors of said The Metropolitan Water District of Southern California are in substance as follows:

1. That said area shall be annexed to the San Diego County Water Authority and to the Rio San Diego Municipal Water District concurrently with the annexation of said territory to The Metropolitan Water District of Southern California, and such annexation shall be completed, and all necessary certificates, statements, maps and other documents required to be filed by or on behalf of said San Diego County Water Authority or by or on behalf of said Rio San Diego Municipal Water District to effectuate such annexation shall be filed in the respective offices required by law, on or before December 1, 1960.

2. That in the event of such annexation:

a. There shall be levied by said Metropolitan Water District special taxes upon taxable property within said area, in addition to the taxes elsewhere in the Metropolitan Water District Act (Stats. 1927, page 694, as amended) authorized to be levied by said Metropolitan Water District;

b. The aggregate amount to be raised by such special taxes shall be \$289,890.00;

c. The number of years prescribed for raising such aggregate sum shall be thirty years, commencing with the fiscal year 1961-1962;

d. Substantially equal annual levies will be made for the purpose of raising said sum over the period so prescribed.

3. That in the event of such annexation, all feeder pipe lines, structures, connections, and other facilities required for the delivery of water to said territory, from works owned or operated by said Metropolitan Water District, shall be constructed, provided and installed without cost or expense to said Metropolitan Water District, and said Metropolitan Water District shall be under no obligation to provide, construct, operate or maintain such works.

Section 5. That there shall be submitted to the qualified voters of the territory proposed to be annexed, as described in Section 2 hereof, at a Special Municipal Water District Election to be held therein, the proposition of annexing said areas to Rio San Diego Municipal Water District and concurrently therewith to San Diego County Water Authority and The Metropolitan Water District of Southern California, subject to the said terms and conditions fixed by the Board of Directors of Rio San Diego Municipal Water District, the Board of Directors of San Diego County Water Authority and the Board of Directors of The Metropolitan Water District of Southern California.

Section 6. An election is hereby called, ordered and proclaimed to be held on Tuesday, the 27th day of September, 1960, pursuant to the Municipal Water District Act of 1911, as amended, and other laws applicable thereto, for the purpose of submitting to the qualified voters of said Rio San Diego Municipal Water District No. 3 Annexation, the proposition of annexing said areas to Rio San Diego Municipal Water District, to San Diego County Water Authority and The Metropolitan Water District of Southern California, subject to the terms and conditions fixed by the Board of Directors of Rio San Diego Municipal Water District, as set forth in Section 4 hereof, and subject to the terms and conditions fixed by the Board of Directors of San Diego County Water Authority as set forth in Section 4 (e) hereof, and also subject to the terms and conditions fixed by the Board of Directors of The Metropolitan Water District of Southern California as set forth in Section 4 (f) hereof.

The ballots to be used in said election called for herein, in addition to such other matters as are required by law, shall contain the following:

MEASURE SUBMITTED TO VOTE OF VOTERS

Shall the areas called "Rio San Diego Municipal Water District No. 3 Annexation" be annexed to Rio San Diego Municipal Water District and to San Diego County Water Authority and to The Metropolitan Water District of Southern California, subject to the terms and conditions fixed by the Boards of Directors of said Rio San Diego Municipal Water District, said San Diego County Water Authority and said The Metropolitan Water District of Southern California?

YES

NO

Section 7. Notice is hereby given and proclamation is hereby made

to the qualified voters residing within said areas proposed to be annexed of the holding of said Special Municipal Water District Election on Tuesday the 27th day of September, 1960, at 7:00 o'clock A.M.; notice is hereby given and proclamation is hereby made of the terms and conditions as set forth in Section 4 hereof, upon which said areas may be annexed to and become a part of Rio San Diego Municipal Water District, and may be annexed to and become a part of San Diego County Water Authority, and may be annexed to and become a part of The Metropolitan Water District of Southern California.

Section 8.

(a) For the purpose of holding said Special Municipal Water District Election on September 27, 1960, Special Municipal Water District Election Precincts No. 1, No. 2, No. 3, No. 4, and No. 5, are hereby formed.

(b) Precinct No. 1 shall consist of the following San Diego County General Election Precincts: Portions of Precincts CS-1, CS-3, FN-1, FN-2, LV-2, MR-5A and MR-6A.

i. The polling place for said Special Election Precinct No. 1 shall be at the Longbehn residence located at 373 Al Bahr Road, La Cresta, in the County of San Diego.

ii. The election officers for said Special Election Precinct No. 1 shall be as follows:

Inspector: Elizabeth M. Longbehn
Judge: Elsie E. Tye
Clerk: Charles R. Tye
Clerk: Mary J. Bray

(c) Precinct No. 2 shall consist of the following San Diego County General Election Precincts: All of Precincts DH-2, DH-3 and DH-5; Portions of Precincts DH-1, DH-4 and HR.

i. The polling place for said Special Election Precinct No. 2 shall be at the Harbison Canyon Community Hall located on Noakes Street, Harbison Canyon, in the County of San Diego.

ii. The election officers for said Special Election Precinct No. 2 shall be as follows:

Inspector: Marguerite Hopkins
Judge: Dorothy H. Baker
Clerk: Hazel Gibb
Clerk: Beulah F. Culver

(d) Precinct No. 3 shall consist of the following San Diego County General Election Precincts: All of Precincts AP-1A, AP-1B, and AP-2; Portion of AP-3.

i. The polling place for said Special Election Precinct No. 3 shall be at the Alpine Youth Center, located on Highway 80, Alpine, in the County of San Diego.

ii. The election officers for said special Election Precinct No. 3 shall be as follows:

Inspector: Paul C. Davis
Judge: Harry A. Colby
Clerk: Vivian E. Jungnitsch
Clerk: Helen P. Hallett

(e) Precinct No. 4 shall consist of the following San Diego County General Election Precincts: Portions of Precincts AP-4 and AP-5.

i. The polling place for said Special Election Precinct No. 4 shall be at the Community Church, Fuller Hall, located on Marshall Road,

Alpine, in the County of San Diego.

ii. The election officers for said Special Election Precinct No. 4 shall be as follows:

Inspector: Frank J. Doerr
Judge: Mava Wilson
Clerk: Ruth F. Chynoweth
Clerk: Myrtle Ingels

(f) Precinct No. 5 shall consist of the following San Diego County General Election Precincts: Portion of Precinct Lakeside 10.

i. The polling place for said Special Election Precinct No. 5 shall be at the Hamlet Ranch, located on Barona Road, in the County of San Diego.

ii. The election officers for said Special Election Precinct No. 5 shall be as follows:

Inspector: Ernest H. Hamlet
Judge: Patricia A. Hamlet
Clerk: Louise Hamlet
Clerk: Rose M. Castro

(g) Rental to be paid for each of the aforementioned polling places, if any, is hereby fixed at \$8.00. All of the persons above named are hereby appointed as such election officers of Special Municipal Water District Precincts designated and compensation is hereby fixed at \$12.00 for each Inspector and \$10.00 for each Judge and each Clerk.

Section 9. Each of said polling places will be open on the day of said election from the hour of 7:00 o'clock A.M. until the hour of 7:00 o'clock P.M. of said day, when the polls will be closed, except as provided for in Section 5734 of the Election Code of the State of California.

Section 10. The Secretary of Rio San Diego Municipal Water District is hereby authorized, directed and instructed to make all arrangements for the holding and conducting of said Special Municipal Water District Election in accordance with the provisions of the Election Code of the State of California, and of the Municipal Water District Act of 1911, as amended, relating to the holding and conducting of said Special Election, the qualifications of electors, the manner of voting, and the duties of election officers, and said election shall be conducted, the votes received, the votes counted, the returns canvassed and the results thereof ascertained, determined and declared, all in the manner required by the Election Code of the State of California except as otherwise provided by the Municipal Water District Act of 1911, as amended, and as to said exceptions, said Municipal Water District Act of 1911, as amended, shall govern the holding of said election.

Section 11. The canvass of the returns of said special Water District Election shall be made and conducted by the Board of Directors of Rio San Diego Municipal Water District at a meeting to be held for that purpose on the 11th day of October, 1960, at the hour of 7:30 o'clock P.M. of said day at the office of the Lakeside Irrigation District, located on the Northeastly side of Los Coches Road, one and one-half blocks southeasterly of Woodside Avenue in Lakeside Townsite, San Diego County. If it be determined upon the canvassing of the votes cast at such special Municipal Water District Election on the proposition so submitted to the qualified voters of said District that said proposition received the affirmative vote

of a majority of the qualified voters of said Rio San Diego Municipal Water District No. 3 Annexation voting on such proposition at said election, the Board of Directors of Rio San Diego Municipal Water District by and through the President and Secretary thereof shall certify the results of such election on such proposition to the Secretary of State, to the County Recorder of San Diego County, and to the Board of Directors of San Diego County Water Authority, together with a legal description of the boundaries of the territories to be annexed, accompanied by maps or plats indicating such boundaries, and such certificate shall include a record of the proceedings by which such territory has been annexed to Rio San Diego Municipal Water District, to San Diego County Water Authority and to The Metropolitan Water District of Southern California. The Board of Directors hereby authorizes, instructs and directs its President and its Secretary to do and perform all such acts, including said certification, required by law to be done or taken by or on behalf of Rio San Diego Municipal Water District to accomplish such annexation and to record such annexation fully effective for all purposes.

Section 12. A copy of this Ordinance shall be proper notice of said proposed annexation and election as published and the Secretary of the Board of Directors of Rio San Diego Municipal Water District is hereby authorized and directed to give such notice by causing a copy of this Ordinance to be published once a week for three successive weeks, the last publication of which shall be not more than four weeks or less than one week prior to the date of said election, in a newspaper of general circulation, printed and published in San Diego County.

Section 13. This Ordinance shall take effect and be in force from and after its adoption.

ORDERED, ADOPTED AND APPROVED

by the Board of Directors of the Rio San Diego Municipal Water District at a regular meeting held at the office of the Lakeside Irrigation District on the 23rd day of August, 1960, by the following vote, to wit:

AYES: Price, Pumphrey, Rakowski, Walker
NOES: None
ABSENT: Ribley

S/ Charles C. Price

President of the Board of Directors of Rio San Diego Municipal Water District.

ATTEST: S/ Jonas W. Pumphrey,

Secretary of the Board of Directors of Rio San Diego Municipal Water District

CERTIFICATE OF PRESIDENT AND SECRETARY

WE HEREBY CERTIFY that the foregoing is a full, true and correct copy of ORDINANCE NO. 8, adopted by the Board of Directors of Rio San Diego Municipal Water District at a regular meeting held on the 23rd day of August, 1960. IN WITNESS WHEREOF, we have set our hands and seal of the Rio San Diego Municipal Water District this 23rd day of August, 1960.

S/ Charles C. Price
President

(SEAL) S/ Jonas W. Pumphrey
Secretary

Back home to Cat's Acres, from the hospital and major surgery is Mr. F.R. McDonnel, USN ret'd. He is making steady recovery, is on his feet again.

'Vote' Urges Gov. Brown

"Let every California voter's voice be heard" highlights statement on registration by Gov. Pat Brown who says "The basic vital right of every American is to cast his ballot. Remember Sept. 15 is deadline for registering."

"I urge every California adult to check up now on his voting status" he said, "for those who fail to register have thrown away their share of stock in democratic government".

Couple Draw Twins!

A birth announcement from Watertown, N.Y. has just been received from Lyle and Kay Gillette, former resident of Irvine's Trailer Estates, that on Aug. 31 they were blessed with twin boys: David Lyle and Dean Lawrence, at 6 lbs. 3 and 4 lbs 10. Mother is doing fine but Dad has not yet come to! He was stationed at Mt. Laguna for some time as electronics technician.

Back from vacation at Solana Beach is Tommy Dun, 17, son of the Carroll Duns, W. Victoria. He worked there all summer.

Governor Eyeing Foods

Promising effective protection of their food supply, Gov. Pat. Brown has been looking into the use of chemical pest killers in food products, promises Californians that this will be scrutinized and action taken if necessary. He set up a committee on this.

"Use of chemicals presents a perplexing combination of benefits and hazards" states Dr. Malcolm Merrill, state director of public health.

MURLEY TO HOSPITAL

A summer pneumonia siege and complications has put Art Murley, sr., Descanso's TV & Radio expert, into Naval Hospital where he is reported doing fine.

Wm. Coleman, realtor, 15909 Hwy 80, with his wife and three daughters is in Oregon by car to make contacts for some land deals, reports Charley Patton, in charge of the office while he is gone.

The tramp paused outside the house, Lady (shouting) — Clear out. I ain't got no wood to chop. There ain't nothin' you could do around here.
Tramp — But, madam, there is, (with dignity), could give you a few lessons in grammar.

WE NEED LISTINGS
ALPINE BRANCH
LA MESA REALTY CO.
BILL BROWN, Mgr.
2237 Hwy 80 H15-3603

MIXED DRINKS
SHORT ORDERS
CASINO INN
1155 Hwy 80 H15-9581

CHET BROWN
Licensed Electrical Journeyman
ELECTRICAL
WIRING & REPAIRS
H15-2491

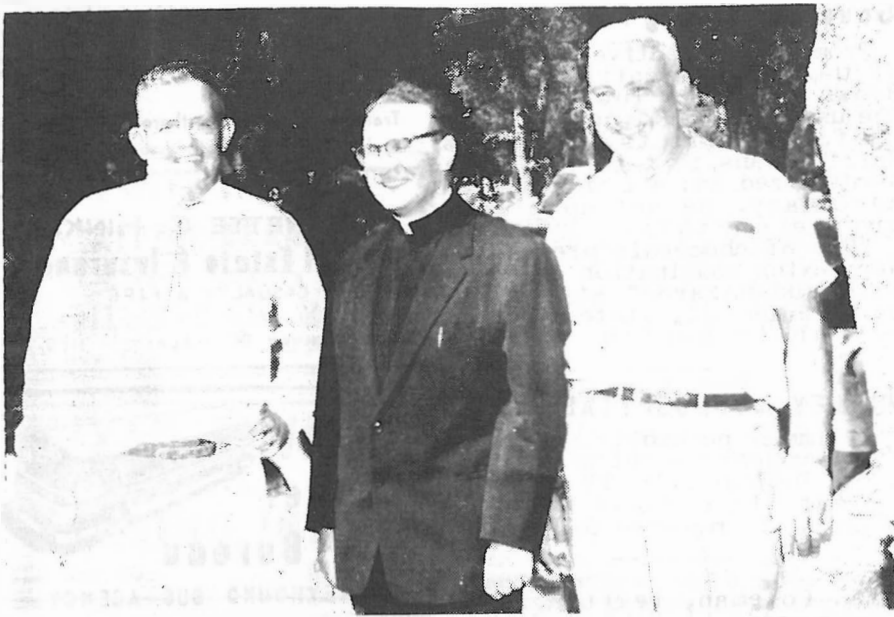
EYES EXAMINED - BROKEN LENS REPLACED - VISUAL TRAINING
H. DUDLEY WINN, O. D.
HICKORY 4-6129 LOUIS M. WINN, O. D. SINCE 1912
OPTOMETRISTS
120 REA AVE. FIRST STREET NO. OF MAIN EL CAJON, CALIF.

SPECIAL PRICE TILL OCT. 15
OAK FIREPLACE WOOD
\$30 per Cord
DELIVERED - 16 & 24 INCH
WOOD KING Wood Yard
1606 E. Broadway Cor. Hwy 80 El Cajon H12-1881

JEANETTE C. HINKLE
Real Estate & Insurance
CASUALTY & FIRE
2101 HIGHWAY 80 ALPINE H15-2502

El Cajon 
Travel
Bureau
GREYHOUND BUS AGENCY
Scheduled Airline Tickets
To All Points
W. DUNCAN, Agent
423 E. Main, El Cajon, H14-7978

NORMAN C. ROBERTS Co.
Member New York Stock Exchange
Brokers and Dealers In Securities of
America's Leading Companies
494 N. MAGNOLIA
H12-5557
Complete Boardroom Facilities
East County's Only New York
Stock Exchange Member



Kip's Cafe
FINE CHINESE FOOD
 Delicious, Oriental, Exotic
 ORDERS TO GO. ALSO HOME DELIVERY
 Closed Monday - Free Parking
 1058 E. Main, El Cajon, HI2-1211

TRIO THAT WAS RESPONSIBLE FOR SUCCESS OF BIG CATHOLIC CHURCH BAR-B-Q IN DESCANSO. FROM LEFT, NEWTON MARTINEZ, VICE-CHAIRMAN; FR. ANDREATTA, AND JOE MAGGIO, OWNER OF THE BEAUTIFUL RANCH.

Admitted for the coming school year at UC in Davis is Louis H. Landt, jr. who will major in agriculture.

 **BLUE ROCK** AUTO SERVICE
 WE GIVE S & H GREEN STAMPS
 2151 Hwy 80 Opp. Postoffice HI 5-9586

COMPLETE APPAREL SHOPS FOR WOMEN AND MISSES



AND REMEMBER. THERE IS NEVER AN EXTRA CHARGE WHEN YOU SAY "CHARGE IT"

145 SOUTH MAGNOLIA
 EL CAJON
 OPEN MONDAY & FRIDAY NIGHTS
 Hickory 4-2177

QUALITY APPAREL SHOPS FASHION

SMART SHOPS IN EL CAJON . LEMON GROVE . NATIONAL CITY . PACIFIC BEACH

Small Talk

By Cynthia Irvine
 Age 11, 6th Grade

I want to thank the SD Union for putting my ad for feeding tubs in their free Kid Want Ads. I had about 15 offered to me free and a lot of others real cheap. I already have picked up one and as soon as Daddy is free we will get several more so I can put them up in the back pasture for our three horses. They drink a lot of water and needed the tubs.

Daddy was in Florence's Market Monday and she told him her dog Lady still had one cute puppy left. It is mostly German shepard and real cute. If you can have her call Florence at HI5-2436.

Last Saturday Dinkey Frey celebrated her 8th birthday with a party. Mike and Doug Shorter, Cecile, and Celeste Irvine, Libby Wake, Kimberly Emerson and her brothers Kent and Kevin came. She got a lot of nice presents.

Jay Schaaf left last week for a nice vacation to Yellowstone with his sister Gail and her husband.

Mike Webb had three day measles last week and now his


brother Tim will probably be next.

Calla Rae McClure was 10 this past Monday and invited my sisters to her party but they were in LA so couldn't go.

Kimberly Emerson gave Ginney Frey a baby pig. She named it Penelope.

The FRUIT BOWL
MOUNTAIN PEACHES
 Other Fresh Fruits
 HI5-3329
 15,430 Hwy 80 Alpine

Road Oiling
Fred D. RUSHING
 GRADING & EQUIPMENT RENTAL
 BACKHOE WORK
 ROADS
 DRIVEWAYS
 BUILDING SITES
 TRENCHING
 HI5-2214
 ALPINE, CALIF.



Helpfulness to the bereaved family
 * * * * *
 We relieve you of every responsibility
 * * * * *
 Spare you of every detail
 * * * * *
 Anticipate every need
 * * * * *
 Observe every wish

PARIS MORTUARY
 Member San Diego County
 Independent Funeral Directors Assn.
374 N. MAGNOLIA AVE.
HI 4-5195, EL CAJON, CALIF.

Milt Paris

HAIG C. MERIGAN, D.D.S.

DENTIST

PHONE
OFF. HICKORY 4-2139
RES. HICKORY 4-7619

203 PRESCOTT STREET EL CAJON, CALIF

R. R. "Bob" Fulton

LICENSED PLUMBER

NEW WORK . REPAIRS

P.O. Box 292

HI5-2536

ALPINE

Dental Plates

All Types of Dentistry
No Charge for Credit
No Money Down
No Appointment Needed
Low Prices, Fast Service
Open Daily
Including Saturday

345 W. Main
El Cajon

DR. FREE
FAMILY CREDIT
DENTIST

HI 2-5546

ALPINE STORY from page 1

men of all kinds just are not around. Nearly every issue the Sun prints a line or two "Alpine needs a housepainter" or a bookkeeper or something.

Several have read these, come up, looked it over, settled here and are doing well. Perhaps one could not make as much money, or be on full time, but there are other things besides money, say many who love this beautiful area.

But there are numerous lines in which one could make a fair and independent living, and the outlook is splendid for growth, for with the coming of water, which could be in about two years--if voters so decree--opportunities would then treble.

Today this town needs a bookkeeping service, letter shop with public stenographer. A cabinet shop and carpenter are needed every day. There is no refrigeration expert here and that is a must at any season. A roofer could be kept busy most of the time if he lived here, as might a sewer service man, offering septic tank pumping.

Yes, this is indeed the land of opportunity, if one wants to work and grow with an expanding community.

SCHOOL OPENS from page 1

For complete bus schedule and list of all teachers and rooms, see the Sun for Aug. 28 in which these appeared exclusively for the first time. Many parents and the Sun are thanking Supt. Gilley for this service.

Open For Business

MAIN STREET CAR WASH

111 S. First at Main, El Cajon HI4-1641

JOHN & HAZEL SCHAFER, OWNERS

WASH POLISH WAX

"In With GRIME . . . Out With SHINE"

OPEN DAILY

8:30 A.M. to 5:00 P.M.

OPEN SUNDAY

9:00 A.M. to 1:00 P.M.

RHYTHM BOYS PLAY HERE

Saturday night Bob Browne, son of the Clifford Brownes, who recently bought the Stier ranch, 2405 Tavern Road, entertained his group of young musicians the "Rhythm Riders". They have three guitars and drums, which he plays. One of the abandoned chicken slabs was cleaned up and the family and friends sat around while the young players had a grand practice. They hope to play out this winter.

Register by Thursday

Mrs. Charlene Brown, Alpine's deputy registrar of voters, admonishes that Sept. 15 is deadline for signing the great book of qualified voters at the office, 2237 Hwy 80, (IM Realty), "Don't miss the chance to cast your vote at the November election" she says.

Thursday night Alpine Kiwanians will be at Flinn Springs on their regular meeting with hostesses: Mmes. Gilley, Partridge, Sauter and Schaeffer. Door prize is by Fred Rushing.

Green Planters--

Hand made by isobel. \$2.50 up to \$5.50
Only place in alpine selling these attractive gifts.

Isobel's Gift Shop

NOW TAKING YOUR NEW & RENEWAL SUBSCRIPTIONS

ALSO CLASSIFIED ADS FOR THE ALPINE SUN

2249 Hwy 80, Alpine

BUY IT IN ALPINE!

HI5-3106



NEW LINE- House of Randall Cosmetics

PURE- No Wax, No Filler, No Chemicals, No Coal-tar
Made in Hollywood Exclusively for Health
Food Stores from finest Fruit & Vegetable
Oils & Herbs.

VALLEY HEALTH FOOD STORE

SHOP HERE FOR THE HEALTH OF YOUR FAMILY

133 Prescott, El Cajon HI4-8447 W.L. Houghton, owner

CLASSIFIED ADS PAY OFF.

For Trailers and Residences Patios and Commercial

**BEAUTIFUL, PERMANENT
ALUMINUM AWNINGS**

Manufactured By
EL CAJON AWNING & MFG CO.

HI 2-1648

845 El Cajon Blvd.

El Cajon,

Established 1875

PERCY H. GOODWIN CO.

NOW OFFERS TO THE HEARTLAND AREA THROUGH ITS EL CAJON OFFICES COMPLETE REAL ESTATE & INSURANCE SERVICE. SALES-DEVELOPMENT - LEASING - APPRAISAL - FINANCING SUB-DIVISION - INSURANCE. LISTINGS PROMPTLY CHECKED.

PERCY H. GOODWIN Co.

COMPLETE PROPERTY
INSURANCE SERVICE

490 N. Magnolia

HI2-8871

El Cajon

SUBSCRIBE TO THE SUN, \$2 A YEAR

CLASSIFIED

30¢ PER LINE PER TIME. CASH ONLY. COUNT SIX WORDS TO EACH LINE. MAIL TO THE SUN, ALPINE, CALIF. CASH, CHECK, COIN OR STAMPS O.K.

FOR SALE, MISCELLANEOUS

HAND MADE ROPING SADDLE \$115. CASH. -- 6 MO. OLD PART NUBIAN DOE GOAT. -- IRONER. FRIGIDAIRE MAKE. \$50. H15-3897.

HOUSES FOR RENT

1 & 2 BR. \$45.-\$50. UNFURN. HOUSES. GUATAY. FIREPLACES & SHADE TREES. CY6-4603 (9-16)

2 BR FURNISHED PRACTICALLY NEW ADULTS. \$75. 2751 HWY 80 EAST. H15-3839.

FURNISHED L-BR COTTAGE ON VICTORIA DR. UTILITIES. \$75. ADULTS ONLY. H15-3755.

WANTED TO RENT

WANTED TO RENT. 2 OR 3 BR HOUSE FURN. NEAREST TO MURPHY'S AUTOMOTIVE. JOHNSTOWN. H14-4367 OR H13-3373. STEVE.

Water Committee Busy

Wednesday night in Alpine school the annexation campaign group held a meeting with Chairman Cecil Lewinson in charge to further discuss plans for giving voters a picture of the annexation to Rio SD MWD. Voting will be on Tuesday, Sept. 27.

For details of this matter see legal notice in this issue wherein will be found all polling places, officers, etc., plus terms, conditions and costs of the proposal.

SPECIAL NOTICES

RUTH BURDETT, PIANO LESSONS H15-2877

LET MAC HAUL YOUR RUBBISH AND GARBAGE. H15-2414

AMERICAN HOMES, Inc.

BUILDS ON YOUR LOT
Homes for every pocketbook
100% FINANCING
BUILDING CONSULTANT
George Huser
H15-3601

from **ZENITH**



new slim mode in eyeglass
"Living Sound" HEARING AIDS*

Zenith CITATION

*You purchase the lenses and frame of your choice from your own Eyeglass Specialist. Only \$210.

FREE DEMONSTRATION!

Weinstock's

169 E. Main, El Cajon, H12-3441

ED MICHAEL STORY from page 1 from his home, 610 St. George Dr., Harbison Canyon.

The Rev. Gerald Woodhouse of the Crest Community Church, of which he was a member, officiated. Burial was in Ft. Rosecrans National Cemetery following graveside services by VFW Post 4497, Harbison Canyon, of which he was a member. He was a native of Delvia, Okla.

Michaels was a self-employed well driller, was well known in the back country, took part in civic affairs, was presently chief of the HC Fire Department. He was a veteran of WW2, having been at Pearl Harbor on Dec. 7, 1941, saw three years' service with the navy in the South Pacific.

Survivors, besides the widow Georgette, are four children, Virginia, 17; Steven, 12; Carl, 11, and Neil, 9; his mother, Mrs. Willison Hill, of SD, and his father, Roy Michaels, of IM.

FOIL ONE-ARMED BANDIT!

Back from a delightful auto trip is Mr. and Mrs. George Fordney and son Don. They visited San Francisco, Seattle, British Columbia and Reno where they "hit the jackpot" they said. "Reno was so crowded over Labor Day", Mrs. Fordney relates "we had to drive 7 miles out of the city to get accommodations". They had a delightful time and all chorus that it was a treat to get away but wonderful to be home again in Alpine.

GET READY NOW! FOR THE FALL RAINS! Let Us Check Your Roofs.

WHY WAIT FOR LEAKS TO MAKE TROUBLE?

KLEIN & KOECHIG ROOFING CONTRACTORS

SEEDING, INSULATION & WATERPROOFING
QUALITY WORKMANSHIP FREE ESTIMATES
260 Woodman St. San Diego 14 CO4-2502 or 5563

FLORENCE'S MARKET

Owned & Operated by Florence Clarke

Groceries - Meat - Fresh Vegetables - Liquor

2262 Highway 80 Hickory 5-2436 Alpine

The Valley's Finest Facilities and Service.

With n the means of all

El Cajon Mortuary

624 El Cajon Blvd.

George Roach, President

H12-6677 El Cajon

Alpine's Fine Weather

FROM OFFICIAL US STATION HERE

HIGH, 97, AVE. HIGH, 94
 LOW, 66, AVE. LOW 71
 NO RAIN, SEASON .06

ELEVATION 2000 FEET
 WHERE THE SUNSHINE SPENDS THE YEAR

Do not get discouraged. It may be the last
 key in the bunch that opens the door.

ROOKLIDGE MOTOR CLINIC**Featuring-**

All types of automotive repairs and services
 on all makes of cars

USED CARS & TRUCKS

8861 La Mesa Blvd.

HO3-7773

Nite Emerg. HO6-8517

THORP MOVES TO EC

After many years in this area, Salter B. Thorp, retired realtor, has moved to the home of his son, C.L. Thorp, 386 Richfield in EC.

Thorp hired W.L. Weeks, local contractor, to build a room and bath on his son's home. He bought new furniture and is all moved in. He lived at Foster's Trailer Court, plans to sell his trailer and live permanently with his son.

NOTICE

to our customers

AL HINKLE

NOW HONORS YOUR

BANKAMERICARD

**ZENITH T.V. - GENERAL ELECTRIC
 APPLIANCES**

YOUNGSTOWN KITCHENS

TV TUBES TESTED FREE

COMPLETE BUILDERS SUPPLIES

Roofing - Cement - Electrical Supplies - Plumbing
 See Us For Special Construction Discount



KEYS MADE WHILE YOU WAIT

AL HINKLE

LUMBER AND RANCH SUPPLIES

2101 Hiway 80

ALPINE

Hickory 5-2184